



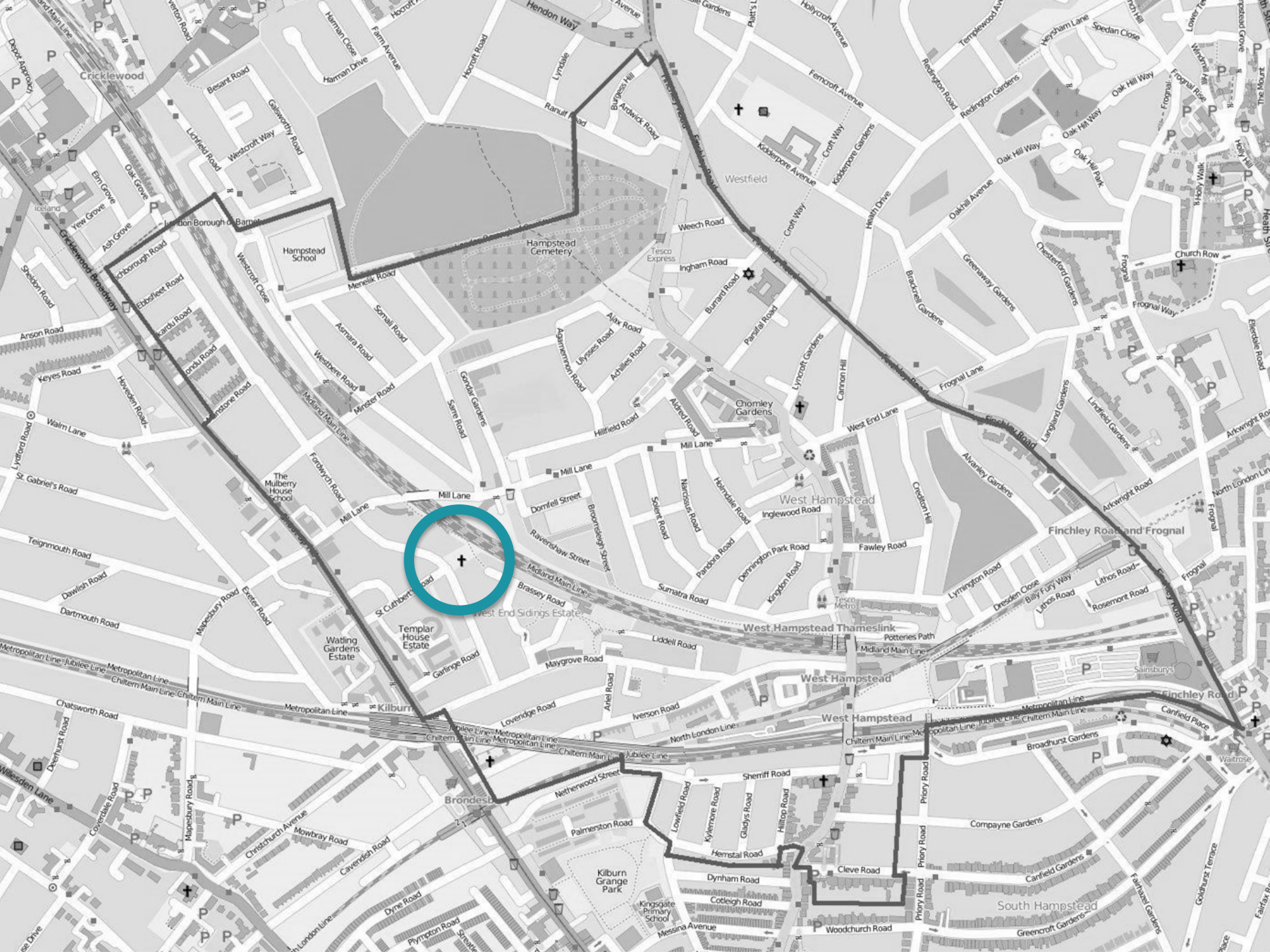
WEST HAMPSTEAD NDF
Neighbourhood Development Forum

DROP IN SESSION

28 SEPTEMBER 2013

NEIGHBOURHOOD PLAN POLICIES

TELL US WHAT YOU THINK!





**FORTUNE GREEN & WEST HAMPSTEAD NEIGHBOURHOOD DEVELOPMENT FORUM
COMMUNITY ENGAGEMENT EVENT**

EVENT PROGRAMME

Saturday 28 September 2013

St Cuthbert's Church Hall, Fordwych Road

Time	Item	Led by
10:30	Exhibition opens, tea and coffee	NDF committee
MORNING SESSION		
11:00	Welcome <ul style="list-style-type: none"> • What is neighbourhood planning • NDF's activities to date 	J Earl, Chair, NDF
11:10	Draft Neighbourhood Development Plan (NDP) overview <ul style="list-style-type: none"> • Draft NDP structure • Overview of draft policies • How you can help shape your NDP today • Next steps 	B Savic, Planning Advisor and Facilitator
11:25	Drop-in session (market stalls: NDP vision and objectives; draft policies grouped by theme) <ul style="list-style-type: none"> • Review draft policies, vote and comment 	B Savic, Members of NDF
12:30	Q&A	B Savic
LUNCH		
13:00	Open space style discussion	All
AFTERNOON SESSION		
14:00	Welcome <ul style="list-style-type: none"> • What is neighbourhood planning • NDF's activities to date 	J Earl
14:10	Draft NDP overview <ul style="list-style-type: none"> • Draft NDP structure • Overview of draft policies • How you can help shape your NDP today • Next steps 	V Goodstadt Planning Advisor and Facilitator
14:25	Drop-in session (market stalls: NDP vision and objectives; draft policies grouped by theme) <ul style="list-style-type: none"> • Review draft policies, vote and comment 	B Savic, V Goodstadt, Members of NDF
15:30	Q&A	V Goodstadt
16:00	Open space style discussion	All
16:30	Close	



CONTENTS

1. What a Neighbourhood Plan can and cannot do
2. Neighbourhood planning process
3. Draft Neighbourhood Plan structure
4. Draft policies & recommendations
5. Next steps
6. How you can help today

What a Neighbourhood Plan can and cannot do

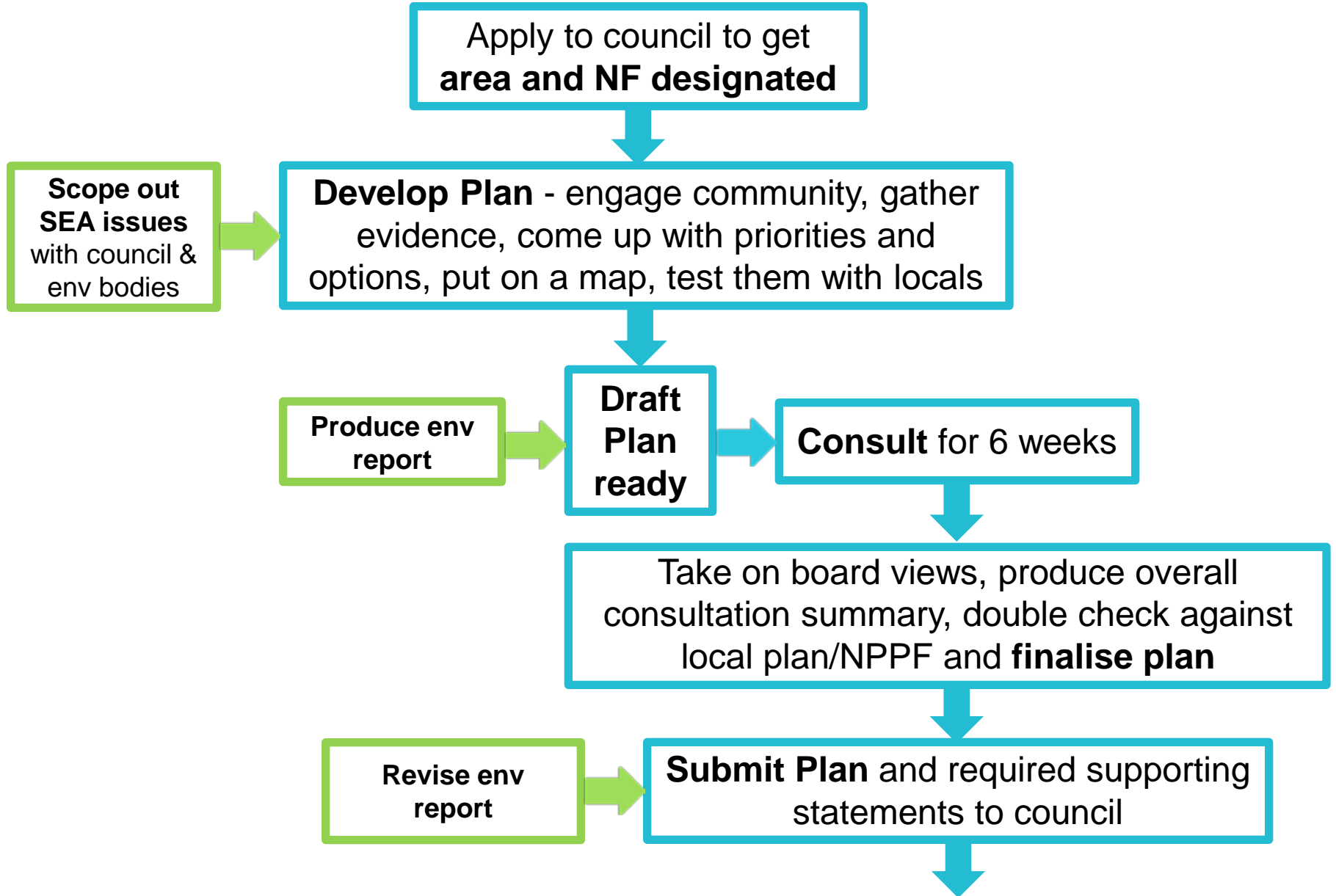
A Neighbourhood Plan can...

- decide where and what type of development should happen
- promote more development than is set out in the Local Plan
- include policies, e.g. regarding design standards, that take precedence over existing policies in the LP for the neighbourhood.

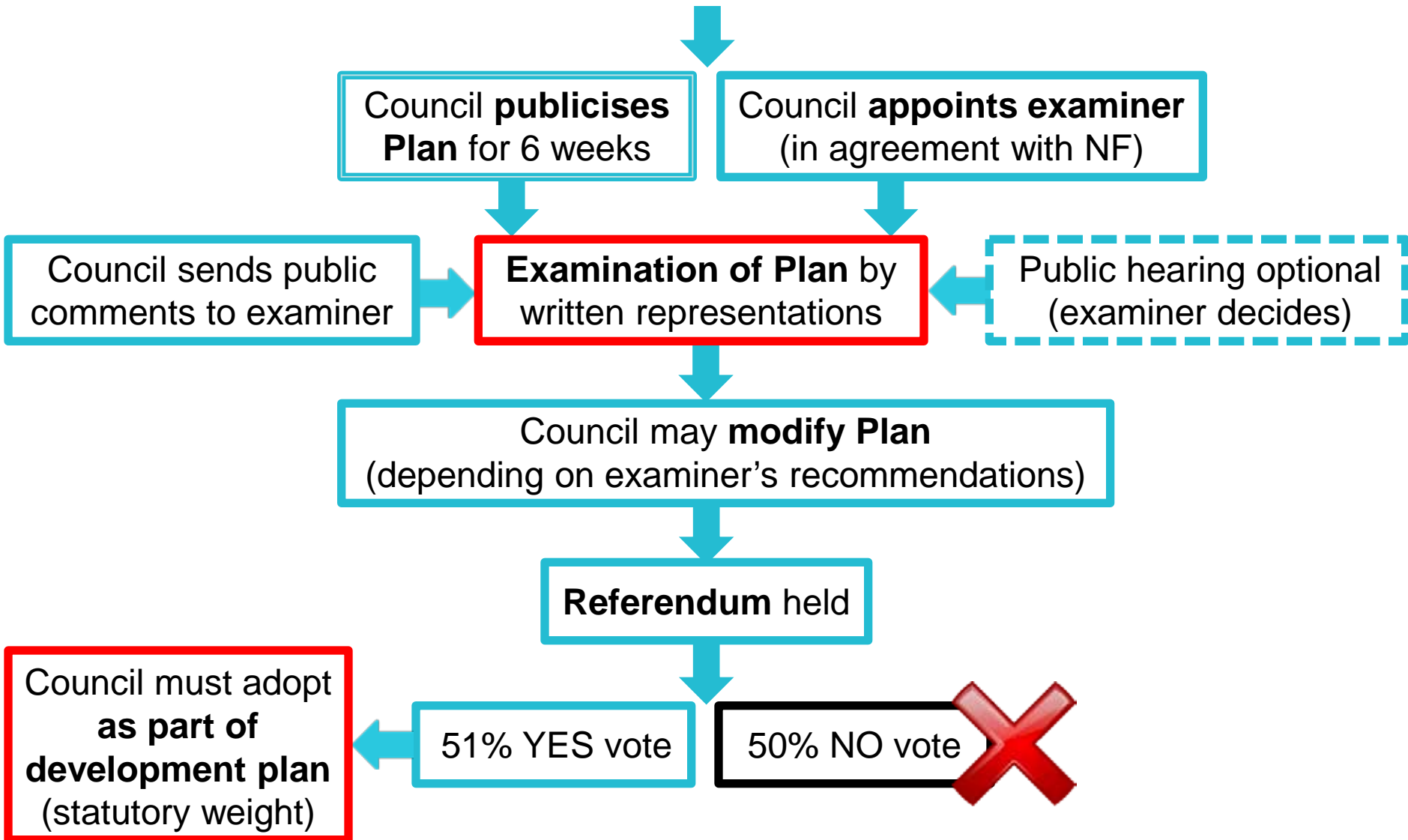
A Neighbourhood Plan in Camden cannot...

- conflict with the strategic policies in the LP prepared by Camden
- be used to prevent development that is included in the LP
- be prepared by a body other than a Neighbourhood Forum.

Process – stages led by neighbourhood body



Process – stages led by local authority



Types of policies in Fortune Green and West Hampstead Neighbourhood Plan

- Vision
- General objectives
- Specific development policies & proposals
 - New development
 - Traffic & transport
 - Protection of local facilities & amenity
- Related recommendations for action

The Vision

Development in Fortune Green and West Hampstead will allow for a **mixed, vibrant and successful local community**.

The Area has a distinct and widely appreciated **village character** with a **variety of amenities** and **excellent transport links**. This Plan seeks to **retain and protect** these positive features, while allowing for **new housing, new jobs and sustainable growth** in the years ahead.

Objectives

- **Housing** (to provide a range of housing and housing types, including social and affordable housing, suitable for families, old people and young people.)
- **Quality of design & character** (to fit in with the existing styles of the Area, large parts of which are covered by Conservation Areas)
- **Transport** (to enhance the provision of public transport)
- **Public & community facilities** (to contribute to public and community facilities and bring improvement to meet the needs of the growing population)
- **Economy** (to promote and support a successful local economy, with thriving town and neighbourhood centres.)
- **Natural environment** (to protect and enhance existing green/open space and the local environment)

Policies & proposals

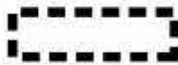
New developments

1. Housing, design & character
2. Safeguarding and enhancing Conservation Areas & heritage sites
3. West Hampstead Growth Area
4. Control of specific sites
 - Liddell Road
 - Gondar Gardens
 - West Hampstead Police Station
 - West Hampstead Fire Station
 - Fortune Green Play Centre
 - Mill Lane
 - Maygrove Road
 - Iverson Road
 - Finchley Road
 - ENO Rehearsal Rooms

Potential Development Sites



LDF Growth Area



Targets

London Plan: 800 homes & 100 jobs by 2031

Camden Council: around 1,000 homes

With permission: 683 homes (Aug 2013)

Liddell Road Industrial Workshops

148-152 West End Lane (car park)

156 West End Lane

Substation Lithos Road

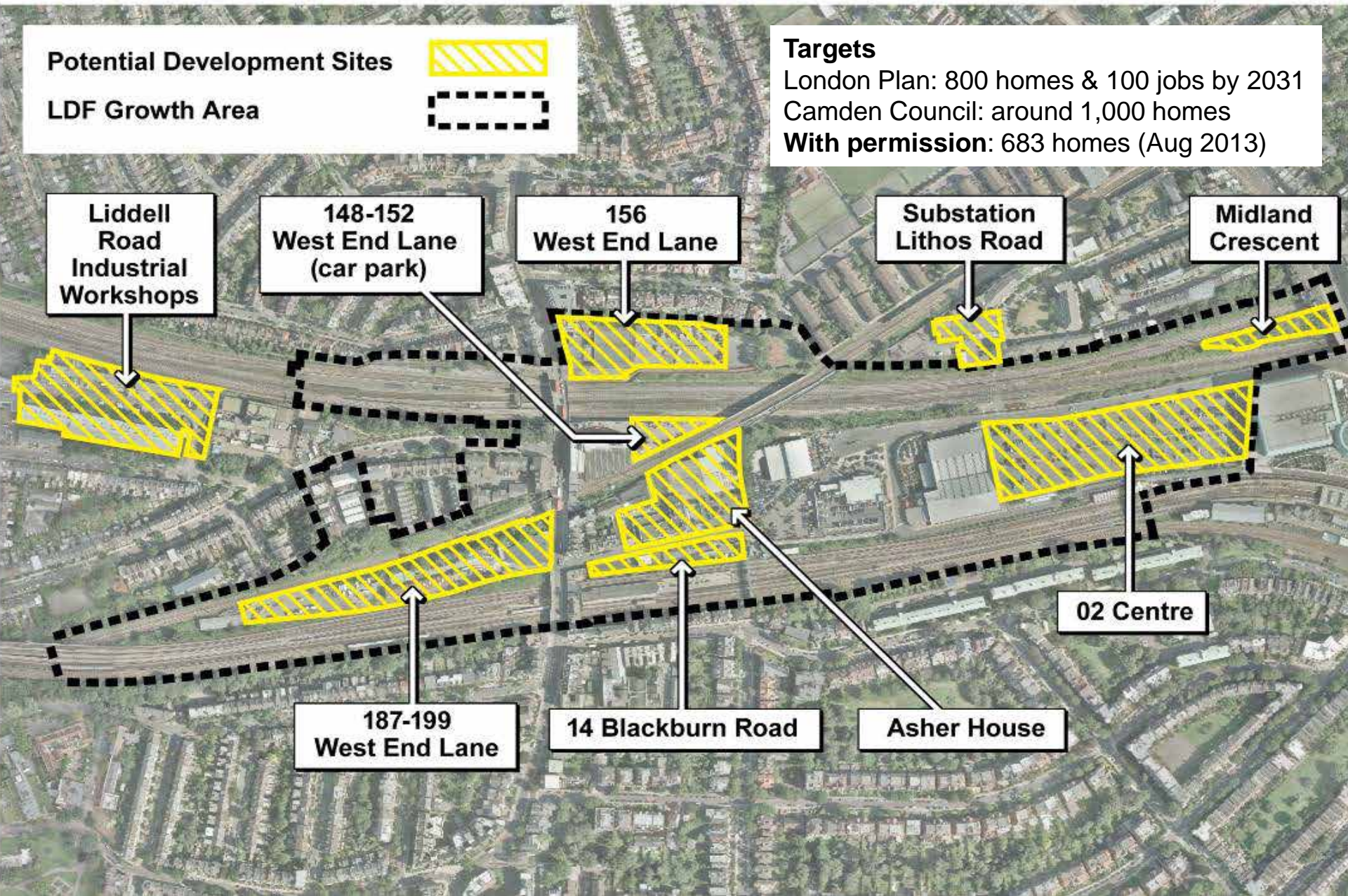
Midland Crescent

02 Centre

187-199 West End Lane

14 Blackburn Road

Asher House



Policies & proposals

Traffic and transport

5. Improvement of public transport
6. Road traffic
7. Improvements for cycling
8. Improved pavements & space for pedestrians

Policies & proposals

Sefeguarding local facilities & amenity

9. Improved public & community facilities
10. Protection of existing employment & small businesses
11. Support for West Hampstead Town Centre
12. Protect & enhance Mill Lane Neighbourhood Centre
13. ...and Fortune Green Neighbourhood Centre
14. Designation of local green spaces
15. Protect and create new green / open spaces
16. Protect existing and provide new trees

Related recommendations for action

Examples

- Greater enforcement of approved planning applications
- Greater transparency
- Article 4 Direction & advertisement control in West End Lane
- Support for SME
- Improve signage
- 20 mph speed limit
- Extend bicycle hire scheme
- Remove street clutter
- Private gardens policy
- Developers to actively engage with community etc.



NEXT STEPS

Expected...

Completion of draft NDF:
Dec 2013

Statutory consultation:
Jan-Feb 2014

Publication of Draft by
Camden Council:
Mar-Apr 2014

Examination:
Jun-Jul 2014

Referendum:
Oct 2014



HOW CAN YOU HELP

- Mark your favourite draft policies
- Add to & comment on draft policies
- Suggest new policies
- Suggest specific application of policies
- Mark on the map your priority improvement areas
- Tell us if you have other concerns related to our Neighbourhood Plan



QUESTIONS?